

1) Sensing surface, 2) Housing, 3) Cover



Basic features

| | |
|---------------------|-----------------------------|
| Approval/Conformity | CE UKCA cULus WEEE |
| Basic standard | IEC 60947-5-2 |
| Scope of delivery | Nut (2x) |
| Sensitivity | adjustable on base unit |
| Series | M12 |

Electrical connection

| | |
|-----------------------------|-------------------------------------|
| Cable length L | 2 m |
| Connection | Special connector-Special connector |
| Polarity reversal protected | not relevant |
| Short-circuit protection | not relevant |

Electrical data

| | |
|--------------------------------|-----------|
| Operating voltage U_b | 4...8 VDC |
| Rated insulation voltage U_i | 75 V DC |
| Ripple max. (% of U_e) | 10 % |
| Switching frequency | 100 Hz |
| Utilization category | DC -13 |

Environmental conditions

| | |
|---------------------|-------------|
| Ambient temperature | -30...80 °C |
| IP rating | IP67 |

Functional safety

| | |
|--------------|--------|
| MTTF (40 °C) | 1813 a |
|--------------|--------|

Interface

| | |
|-----------|-------------------|
| Interface | Special interface |
|-----------|-------------------|

Material

| | |
|--------------------------|------------------------|
| Cover material | POM |
| Housing material | 1.4301 stainless steel |
| Material jacket | PUR |
| Material sensing surface | PTFE |

Mechanical data

| | |
|-------------------|--------------|
| Dimension | Ø 12 x 34 mm |
| Installation | non-flush |
| Size | M12x1 |
| Thread (A) | M12x1 |
| Tightening torque | 40 Nm |

Range/Distance

| | |
|----------------------------------|----------|
| Hysteresis H max. (% of Sr) | 10.0 % |
| Measuring range | 1...8 mm |
| Rated operating distance S_n | 8 mm |
| Repeat accuracy max. (% of Sr) | 2 % |
| Temperature drift max. (% of Sr) | 20 % |

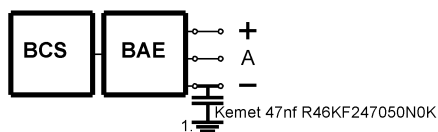
Remarks

Required accessories, sensor amplifier BAE SA-...

For more information about MTTF and B10d see MTTF / B10d Certificate

Indication of the MTTF- / B10d value does not represent a binding composition and/or life expectancy assurance; these are simply experiential values with no warranty implications. These declared values also do not extend the expiration period for defect claims or affect it in any way.

Installation remarks



1) Machine GND