

1) Sensing surface, 2) Housing, 3) Cover, 4) Potentiometer, 5) NO or NC selectable, 6) LED function indicator



Basic features

Approval/Conformity	CE cULus EAC WEEE
Basic standard	IEC 60947-5-2
Scope of delivery	Nut (2x)
Series	M30

Display/Operation

Function indicator	yes
Power indicator	yes

Electrical connection

Connection	M12x1-Male, 4-pin, A-coded
Number of pins	4
Polarity reversal protected	yes
Protection against device mix-ups	yes
Short-circuit protection	yes

Electrical data

Operating voltage U_b	10...35 VDC
Rated insulation voltage U_i	75 V DC
Rated operating current I_e	300 mA
Ripple max. (% of U_e)	10 %
Switching frequency	100 Hz
Utilization category	DC -13
Voltage drop static max.	1.8 V

Environmental conditions

Ambient temperature	-30...70 °C
IP rating	IP66, IP64 at connector output

Functional safety

MTTF (40 °C)	455 a
--------------	-------

Interface

Switching output	NPN NO/NC programmable
------------------	------------------------

Material

Cover material	PBT PE
Housing material	PBT
Material sensing surface	PBT

Mechanical data

Dimension	Ø 30 x 87 mm
Installation	non-flush
Size	M30x1.5
Thread (A)	M30x1.5
Tightening torque	4 Nm

Range/Distance

Hysteresis H max. (% of Sr)	15.0 %
Measuring range	1...30 mm

Rated operating distance S_n	30 mm
Repeat accuracy max. (% of Sr)	5.0 %
Temperature drift max. (% of Sr)	15 %

Remarks

The potentiometer does not have a fixed stop, but can be turned endlessly without destroying anything.
 If no change in the switching signal is detected, the potentiometer should be turned forwards or backwards until a signal change occurs at the output.
 For more information about MTTF and B10d see MTTF / B10d Certificate

Indication of the MTTF- / B10d value does not represent a binding composition and/or life expectancy assurance; these are simply experiential values with no warranty implications. These declared values also do not extend the expiration period for defect claims or affect it in any way.

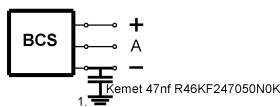
Connector Drawings



Wiring Diagrams (Schematic)



Installation remarks



1) Machine GND