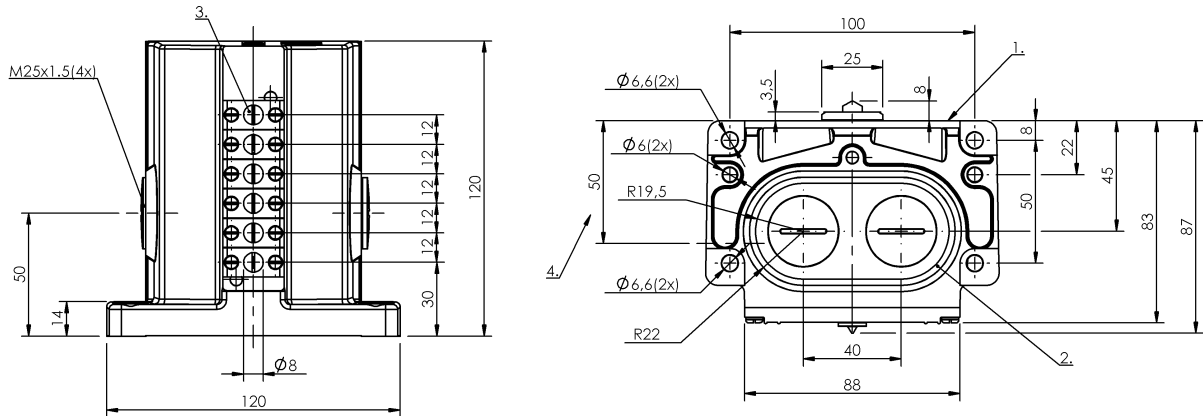


Mechanical Cam Switches
BNS 819-D06-E12-100-14-DH
 Order Code: BNS00L4

BALLUFF



1) Reference edge, 2) Sealing ring, 3) Anti-crystallization plunger, 4) Cable passage



Basic features

Approval/Conformity	CE WEEE
Basic standard	IEC 60947-5-2
DIN switch	DIN 43697
Operating principle	1-6. Switch position: mechanical-inductive
Version	mechanical-inductive

Display/Operation

Function indicator	1-6. Switch position: Optical fiber
--------------------	-------------------------------------

Electrical connection

Connection type	1-6. Switch position: Screw terminal
-----------------	--------------------------------------

Electrical data

Continuous current	1-6. Switch position: 0.4 A
Rated operating voltage Ue	1-6. Switch position: 24 V DC

Environmental conditions

Ambient temperature	-5...85 °C
Protection degree	IP67

Functional safety

MTTF (40 °C)	BES 516-110 D: 695 a
--------------	----------------------

Material

Housing material	Aluminum, Anodized
Housing material, surface protection	Anodized
Plunger material	1-6. Switch position: Stainless steel (1.4034)

Mechanical data

Approach direction	longitudinal, parallel to attachment surface
Approach speed	1-6. Switch position: 30 m/min
Distance cam - reference edge	1-6. Switch position: 4.50...5.00 mm
Flange, feed-through	2 threaded exit M25
Installation	Vertical
Number of switching positions	6x E-Chisel
Plunger style	1-6th switch position: E-chisel
Switching element	1-6. Switch position: BES 516-110 D

Wiring Diagrams

DH

