

Basic features

Application	Ethernet, CAT 5
Approval/Conformity	CE EAC WEEE

Electrical connection

Bending radius min., flexible cable	10 x D
Cable	TPE Shielded teal, 2.00 m, Drag chain compatible
Cable diameter D	6.20 mm ±0.13 mm
Cable, bending cycles min.	1 million
Cable, note	Ethernet, CAT 5E
Conductor cross-section	26 AWG
Connection 1	RJ45-Male, straight, 8-pin
Connection 2	RJ45-Male, straight, 8-pin
Number of conductors	8
System	assembled/assembled

Electrical data

Cable rated voltage AC max.	600 V
Cable rated voltage DC max.	600 V
Conductor construction	4x2 twisted-pair
Operating voltage U_b	42 VDC / 30 VAC
Rated current (40 °C)	1.0 A
Transfer rate	1 Gbit/s

Environmental conditions

Cable temperature, flexible routing	-40...75 °C
Protection degree	IP20/IP20

Material

Cable jacket material, note	Shielded
Cable jacket, material	TPE
Cable shield	Aluminum foil and copper braid
Material contacts	Bronze/Bronze
Material grip	PVC

Mechanical data

Cable jacket, color	teal
Cable length L	2.00 m
Cable properties	Drag chain compatible

Remarks

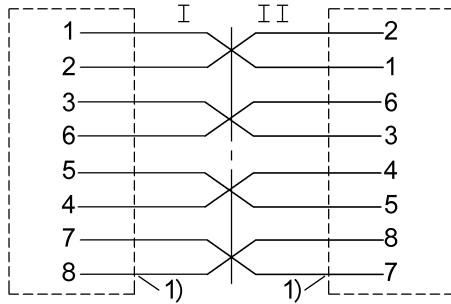
Enclosure rating per IEC 60529 or ISO 20653, only in screwed state with the associated mating piece.

Connector Drawings



I, II

Wiring Diagrams



1) Shield