

### Basic features

Application	Ethernet, CAT 5
Approval/Conformity	CE EAC WEEE

### Electrical connection

Bending radius min., flexible cable	10 x D
Cable	TPE Shielded teal, 8.00 m, Drag chain compatible
Cable diameter D	6.20 mm ±0.13 mm
Cable, bending cycles min.	1 million
Cable, note	Ethernet, CAT 5E
Conductor cross-section	26 AWG
Connection 1	RJ45-Male, straight, 8-pin
Connection 2	RJ45-Male, straight, 8-pin
Number of conductors	8
System	assembled/assembled

### Electrical data

Cable rated voltage AC max.	600 V
Cable rated voltage DC max.	600 V
Conductor construction	4x2 twisted-pair
Operating voltage $U_b$	42 VDC / 30 VAC
Rated current (40 °C)	1.0 A
Transfer rate	1 Gbit/s

### Environmental conditions

Cable temperature, flexible routing	-40...75 °C
IP rating	IP20/IP20

### Material

Cable jacket material, note	Shielded
Cable jacket, material	TPE
Cable shield	Aluminum foil and copper braid
Material contacts	Bronze/Bronze
Material grip	PVC

### Mechanical data

Cable jacket, color	teal
Cable length L	8.00 m
Cable properties	Drag chain compatible

### Remarks

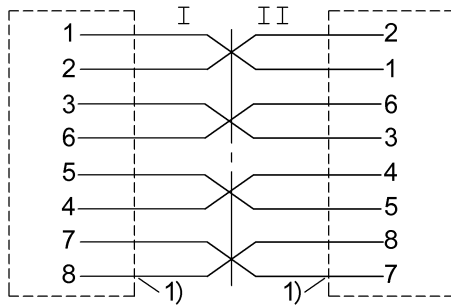
Enclosure rating per IEC 60529 or ISO 20653, only in screwed state with the associated mating piece.

## Connector Drawings



I, II

## Wiring Diagrams



1) Shield